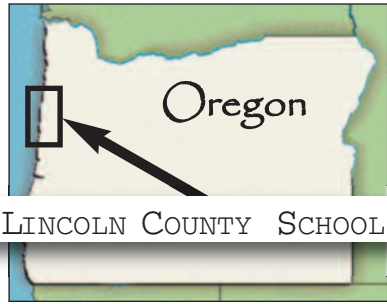


About This Area



Lincoln County School District encompasses all of Lincoln County, serving approximately 5,300 students in grades K-12.

This 55-mile strip along the Central Oregon Coast begins at Cascade Head in the north and continues south to Cape Perpetua. The east-west distance averages 20 miles from the Pacific Ocean to inland areas. The county's total area of just under 1,000 square miles makes it comparable in size to the state of Rhode Island.

A scenic flight over the county reveals its beauty in mountainous wooded terrain, small rivers and streams and sparkling Pacific views. The Central Oregon Coast is a vacation destination for many. Those who live here are fortunate to call this area "home."

The county's 45,000 residents cluster around the coastal communities of Lincoln City, Depoe Bay, Newport (the county seat), Waldport and Yachats, and around the inland communities of Toledo, Siletz and Eddyville.

People choose to live here for the beauty, relaxed lifestyle and friendly people. Lincoln County is a safe and inviting place to raise a family. And yet, short drives of just one or two hours will take you to Portland, Salem, Corvallis and Eugene – and the amenities these larger cities offer.

Your School Board

The Lincoln County School District Board of Directors has an important task: setting policy for the school district with the best interest of children, parents, and the community at heart.

These dedicated school board volunteers are elected to serve, and they greatly value your input! To contact a board member, call the LCSD District Office at 541-265-4403 or send an e-mail message to one of the addresses below.

LIZ MARTIN



Zone 2
(Schooner Creek south through Agate Beach; includes Depoe Bay, Otter Crest)
e-mail: lizard50@live.com

KAREN BONDLEY



Zone 1
(county line south to Schooner Creek; includes Lincoln City, Rose Lodge)
e-mail: karen.bondley@lincoln.k12.or.us

RON BECK, CHAIRMAN



Zone 3
(Newport, from Yaquina Head south through South Beach)
e-mail: ron.beck@lincoln.k12.or.us

KELLEY ELLIS



Zone 4
(East County, includes Siletz, Toledo, Eddyville, Big Elk and Fruitvale)
e-mail: kelley.ellis@lincoln.k12.or.us

AMANDA REMUND, VICE CHAIRMAN



Zone 5
(South County, includes Seal Rock, Waldport, Yachats and Tidewater)
e-mail: amanda.remund@lincoln.k12.or.us

Welcome!

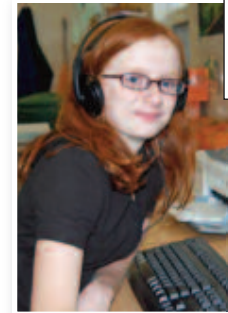
Lincoln County School District is a unique and diverse school district comprised of several highly supportive communities – as reflected by the passing of a \$63 million facilities bond and the multitude of volunteers helping in the schools on any given day.

Our district is known throughout the state as a leader in school safety and disaster preparedness. We also are recognized for our Ocean Literacy Initiative. This initiative partners our schools with key community players to utilize, promote and preserve our local resources while developing students' academic skills. This hands-on, applied learning model is one that is being replicated in classrooms across our district.

Our high quality and energetic staff of educational professionals consistently look for ways to improve teaching and learning by focusing on the success of each and every student. While each school is driven by the district vision of providing quality learning for all, each building also maintains its own identity that is reflective of their respective communities.

We hope you will find our schools a safe and supportive place for children to learn and grow – academically, socially and emotionally.

Steve Boynton
LCSD Superintendent



Building on
our **Strengths**
to improve
student achievement
for all.

How To Contact Us...

You're always welcome to contact our school principals, teachers and other staff by phone or e-mail. The e-mail format for all LCSD employees is:

firstname.lastname@lincoln.k12.or.us

DISTRICT-LEVEL ADMINISTRATION

PHONE: 541-265-9211 **FAX:** 541-574-0511
459 SW Coast Hwy. | P.O. Box 1110 | Newport, OR 97365

Superintendent

Steve Boynton 541-265-4401

Business Office Director

Julie Baldwin 541-265-4409

Curriculum, Instruction & Assessment Administrator

Betsy Wilcox 541-265-4421

Elementary Education/Special Education Director

Susan Van Liew 541-265-4404

Human Resources Director

Michael Morgan 541-265-4436

Secondary Education Director

Eric Clendenin 541-265-4431

Special Education Administrator

Cyndi Henry 541-265-4419

Support Services Director

Rich Belloni 541-265-4400

Technology Director

Forrest Fisher 541-574-5838

NORTH AREA SCHOOLS

Oceanlake Elementary School (grades K-2)

Principal: Sandy Mummey

2420 NE 22nd St., Lincoln City, OR 97367

Office: 541-994-5296

Fax: 541-994-8102

Taft Elementary School (grades 3-6)

Principal: Nick Lupo

4040 SE High School Dr., Lincoln City, OR 97367

Office: 541-996-2136

Fax: 541-996-3999

Taft High 7-12 School (grades 7-12)

Principal: Majalisse Tolan

Assistant Principal: Shelley Moore

Assistant Principal: Bart Rothenberger

3780 SE Spyglass Ridge Dr., Lincoln City, OR 97367

Office: 541-996-2115

Fax: 541-996-4335

Career Tech High School (grades 9-12) *

Principal: Sean Larsen

801 SW Hwy. 101, Suite 404 (inside City Hall)

Lincoln City, OR 97367

E-mail: office@careertech.us

Office: 541-351-8551

Fax: 541-994-7592

* Public Charter Schools *Brochure Revised: August 2016*

EAST AREA SCHOOLS

Toledo Elementary School (grades K-6)

Principal: Paul Tucker

600 SE Sturdevant Rd., Toledo, OR 97391

Phone: 541-336-5121

Fax: 541-336-5407

Toledo Junior/Senior High School (grades 7-12)

Principal: Clint Raever

Assistant Principal: Adam Strachan

1800 NE Sturdevant Rd., Toledo, OR 97391

Phone: 541-336-5104

Fax: 541-336-2970

Eddyville Charter School (grades K-12) *

Principal: Jennifer Johnson

1 Eddyville School Road, Eddyville, OR 97343

Phone: 541-875-2942

Fax: 541-875-2491

Siletz Valley Charter School (grades K-8) *

Siletz Valley Early College Academy (grades 9-12)*

Principal: Samuel Tupou

245 James Frank Ave., Siletz, OR 97380

E-mail: stupou@siletzvalleyschools.org

Phone: 541-444-1100

Fax: 541-444-2368

SOUTH AREA SCHOOLS

Crestview Heights School (grades K-6)

Principal: Kelly Beaudry

2750 Crestline Drive, Waldport, OR 97394

Phone: 541-563-3237

Fax: 541-563-2467

Waldport High School (grades 7-12)

Principal: Diana MacKenzie

Assistant Principal: Justin Haworth

3000 Crestline Drive, Waldport, OR 97394

Phone: 541-563-3243

Fax: 541-563-4145

WEST AREA SCHOOLS

Yaquina View Elementary School (grades K-2)

Principal: Kristin Becker

351 SE Harney St., Newport, OR 97365

Phone: 541-265-4637

Fax: 541-265-4011

Sam Case Elementary School (grades 3-5)

Principal: Tiana Tucker

459 NE 12th St., Newport, OR 97365

Phone: 541-265-8598

Fax: 541-574-2234

Newport Middle School (grades 6-8)

Principal: Aaron Belloni

Assistant Principal: Bob Shindelman

825 NE 7th St., Newport, OR 97365

Phone: 541-265-6601

Fax: 541-265-6493

Newport High School (grades 9-12)

Principal: Jon Zagal

Assistant Principal: Reyna Mattson

322 NE Eads St., Newport, OR 97365

Phone: 541-265-9281

Fax: 541-574-2228



FACEBOOK
Lincoln County School District – Oregon

WEB
www.lincoln.k12.or.us

EMAIL
Questions@Lincoln.k12.or.us

Every Child, Every Day!